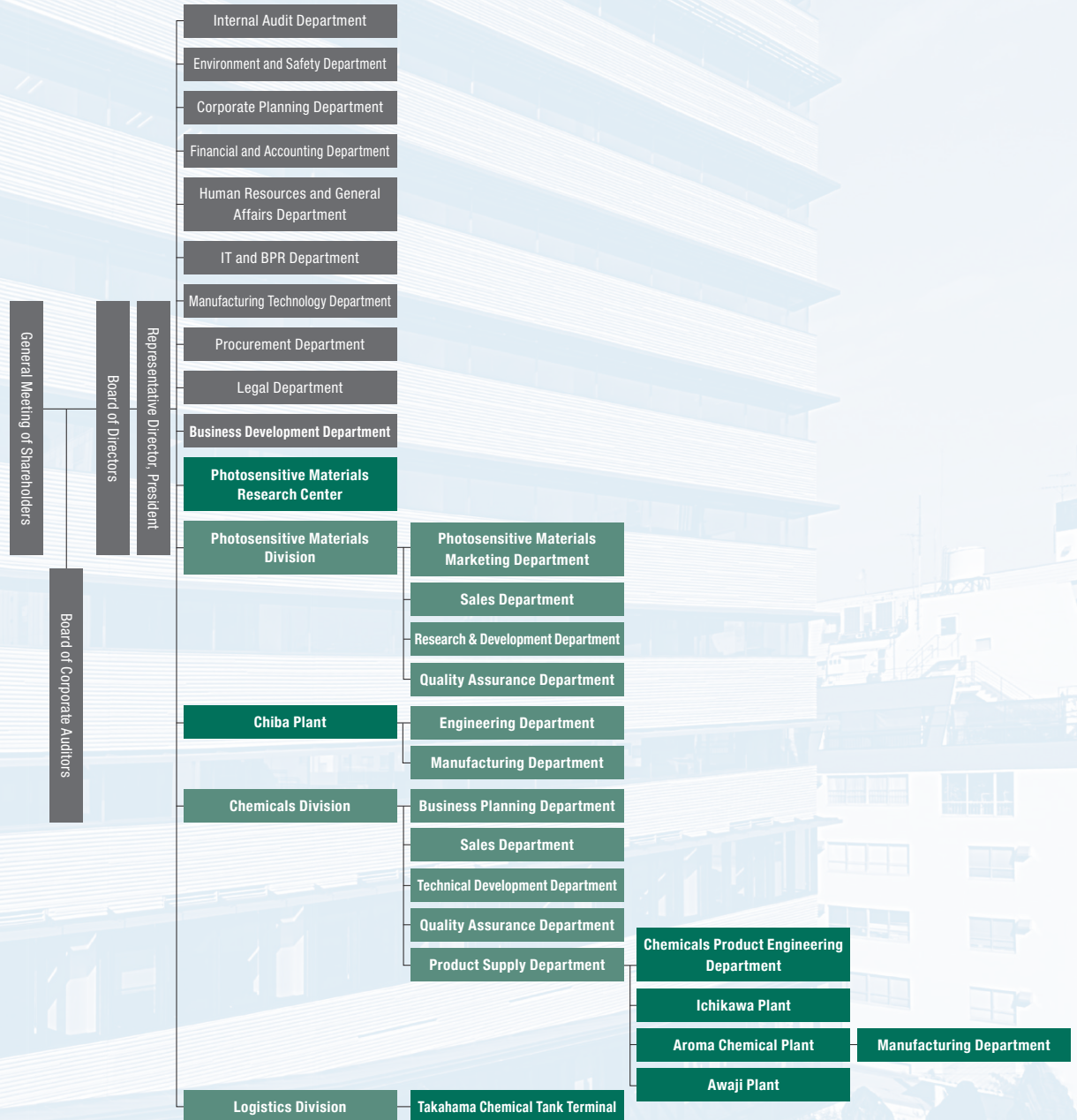


Company Profile (as of July 1, 2024)

Company Name	Toyo Gosei Co., Ltd.	
Head Office	Hulic Asakusabashi Bldg 8F, 1-2-16, Asakusabashi, Taito-ku, Tokyo 111-0053 Japan TEL: +81-3-5822-6170	
Established	September 27, 1954	
Capital	1,618,888,703 yen	
Major Products & Business	<ul style="list-style-type: none"> · Photosensitive materials and polymers for photolithography process (UV, KrF, ArF, EUV) in semiconductor application and display application (LCD and OLED) · Ultra-high purity organic chemicals and solvents for semiconductor and electronic materials industry, organic chemicals for flavor & fragrance industry, logistics service for liquid chemicals 	
Employees	887 people (as of March 31, 2024)	
Correspondent bank	The Chiba Bank, Ltd. Kiraboshi Bank, Ltd. Mizuho Bank, Ltd. Resona Bank, Limited. Development Bank of Japan Inc. The Norinchukin Bank Sumitomo Mitsui Banking Corporation The Minato Bank, Ltd. The Shoko Chukin Bank, Ltd. Nippon Life Insurance Company MUFG Bank, Ltd. The Keiyo Bank, Ltd.	
Director of the Board	President Executive Managing Director Director Director Director Director Auditor Auditor Auditor	Yujin Kimura Akira Deki Satomi Hirasawa Natsuo Watase Munetomo Torii* Tokio Matsuo* Yasushi Mori Shigeo Koshiyama** Toru Goto** * Outside Director ** Outside Auditor

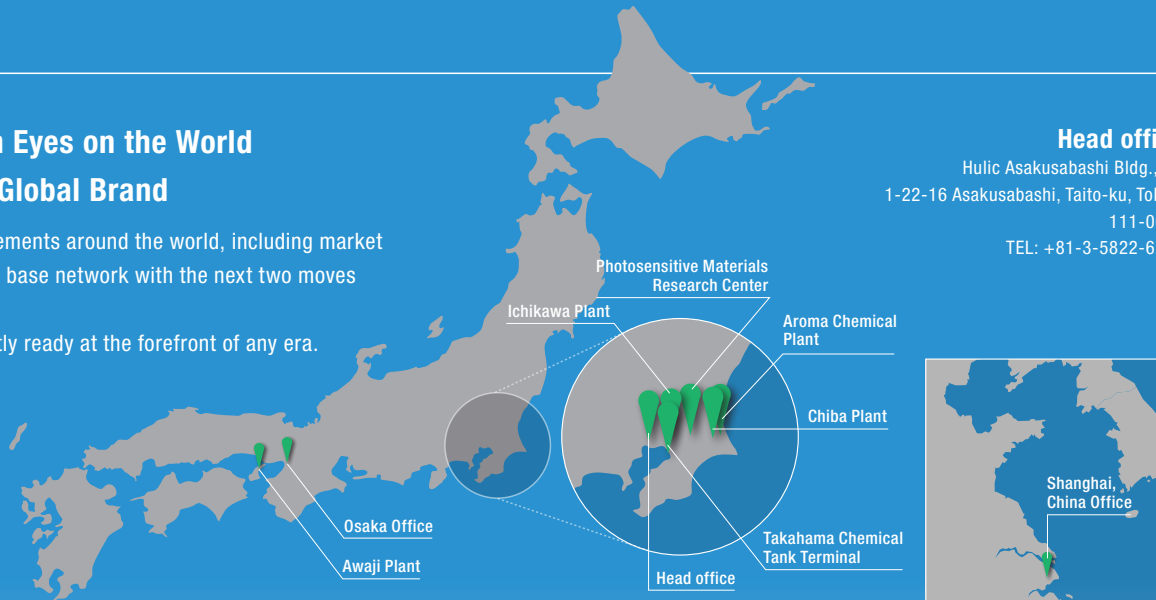
Organization Chart (as of July 1, 2024)



Creating a Base Network with Eyes on the World Becoming a Next-Generation Global Brand

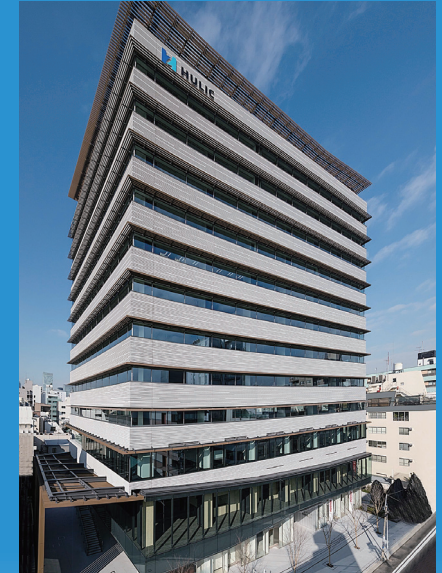
As a global brand, we carefully assess movements around the world, including market trends and growth in demand, as we build a base network with the next two moves ahead always on the horizon.

We aspire to be an organization consistently ready at the forefront of any era.



Head office

Hulic Asakusabashi Bldg., 8F.
1-22-16 Asakusabashi, Taito-ku, Tokyo,
111-0053
TEL: +81-3-5822-6170



Chiba Plant

1-51 Miyanodai, Tonosho-machi, Katori District, Chiba Prefecture, 289-0623
TEL: +81-478-87-1111



Ichikawa Plant

1603 Kamimyoden, Ichikawa City, Chiba Prefecture, 272-0012
TEL: +81-47-327-2121



Aroma Chemical Plant

1-58 Miyanodai, Tonosho-machi, Katori District, Chiba Prefecture, 289-0623
TEL: +81-478-87-2830



Awaji Plant

9-1 Ikuhonijima, Awaji City, Hyogo Prefecture, 656-2225
TEL: +81-799-64-2101



Takahama Chemical Tank Terminal

7 Takahama-cho, Ichikawa City, Chiba Prefecture, 272-0125
TEL: +81-47-395-2151



Photosensitive Materials Research Center

4-2-1 Wakahagi, Inzai City, Chiba Prefecture, 270-1609
TEL: +81-476-98-3361



Osaka Office

NLC Shin-Osaka building No.8
3-9-13 Nishinakajima, Osaka Yodogawa-ku, Osaka 532-0011 Japan
TEL: +81-6-7650-0071



Shanghai, China Office



Rotterdam, Netherlands Warehouse